

Policy Verification and Enforcement

NetDetector captures all insider activity and enables administrators to quickly determine if employees are using the network for productive, work-related activities, if they are browsing/downloading inappropriate content, giving away trade secrets via email, FTP, and chat or running unauthorized services. The result is compliance, increased productivity and optimum use of network resources by employees.

Continuous Traffic Capture and Archival

NetDetector passively and non-intrusively records all malicious network traffic at very high packet rates with zero network impact. NetDetector acts like a security camera on the network.

Full Reconstruction of TCP Sessions and Applications

Supports reconstruction of all major TCP applications, including application-level reconstruction of web (HTTP & HTTPS), email (SMTP/POP3/IMAP4), Telnet, FTP with embedded images, MIME attachments and files transferred, instant messaging (ICQ, Yahoo, MSN, AOL), ASCII, HEX, and much more.

String Search Capabilities

Supports string search expressions on complete flows as well as per packet. Supports multiple foreign languages and multiple encodings (including Base-64 encoding).

Flexible Data Import and Export

Scheduled or on-demand data import/export in native and third party formats via FTP, HTTP, HTTPS, SCP, etc. Equipped with safe, secure and out-of-band management interface. Access is available securely via HTTPS or SSH. HTTP, TELNET, and FTP are also available if required.

Archived Network Traffic Replay

Easy data replay for signature or firewall tuning as well as testing.

Other Integrated Capabilities

Continuous Recording and Storage of Network Traffic: 146GB to 2.7TB in-appliance storage. Unlimited SAN storage support.

On-Demand and Scheduled Reports: NIKSUN NetReporter solution module generates on demand or scheduled security reports.

Web Interface and Role-based Access Control: NetDetector's easy-to-use, web-based interface enables remote access from any computer using standard web browsers. TACACS+ & RADIUS support allows administrators to centrally authenticate and manage users. NetDetector's distributed and scalable architecture provides for complete and correlated monitoring in large scale environments.

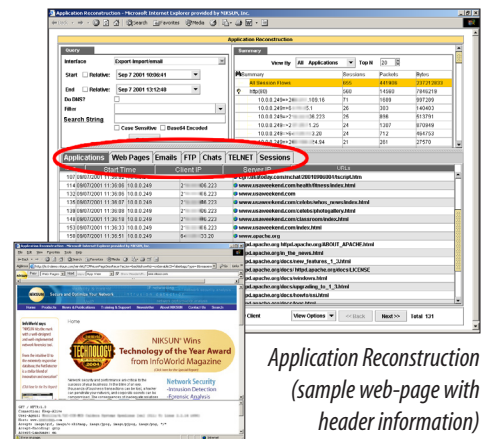
Interfaces Supported: Ethernet: 10Mbps, 100Mbps, 1000Mbps (copper/fiber), T1/E1 (channelized/clear), V.35, X.21, T3/E3 (clear), HSSI, PoS (Packet over SONET) at OC-3/STM-1 & OC-12/STM-4 (scrambled/unscrambled), ATM over DS3, OC-3/STM-1, OC-12/STM-4, OC-48, FDDI, and 10GigE.

Protocols Supported: TCP/IP, UDP/IP, IPv6, MPLS, Frame Relay, PPP, Bay PPP, CISCO HDLC, ATM, MLPPP, WCP, STAC, VLAN (ISL & IEEE 802.1q), IEEE 802.3 (Ethernet), IP fragments.

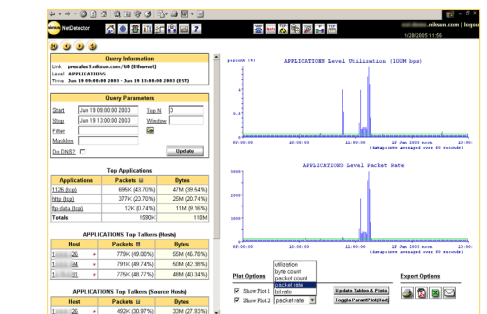
Form Factors: A variety of rack mountable 1U, 2U and 5U form factors are available for data centers, core networks, central offices, and remote branch applications.



Integrated Security Reports



Application Reconstruction (sample web-page with header information)



Traffic Analysis Screen displaying statistics and plots



NIKSUN NetDetector appliance (2U Chassis)

NIKSUN, the NIKSUN logo, NetDetector are either registered trademarks or trademarks of NIKSUN, Inc. in the United States and/or other countries. Other product & company names mentioned herein may be the trademarks of their respective owners. NIKSUN, Inc. shall not be liable for damages of any kind for use of this information, which is subject to change without notice. Copyright © 2007 NIKSUN, INC. All rights reserved. NK-DS-ND07.10



www.niksun.com